

IHE Delft -Intro and Work with Space Data

Ioana Popescu
Associate Prof. of Hydroinformatics



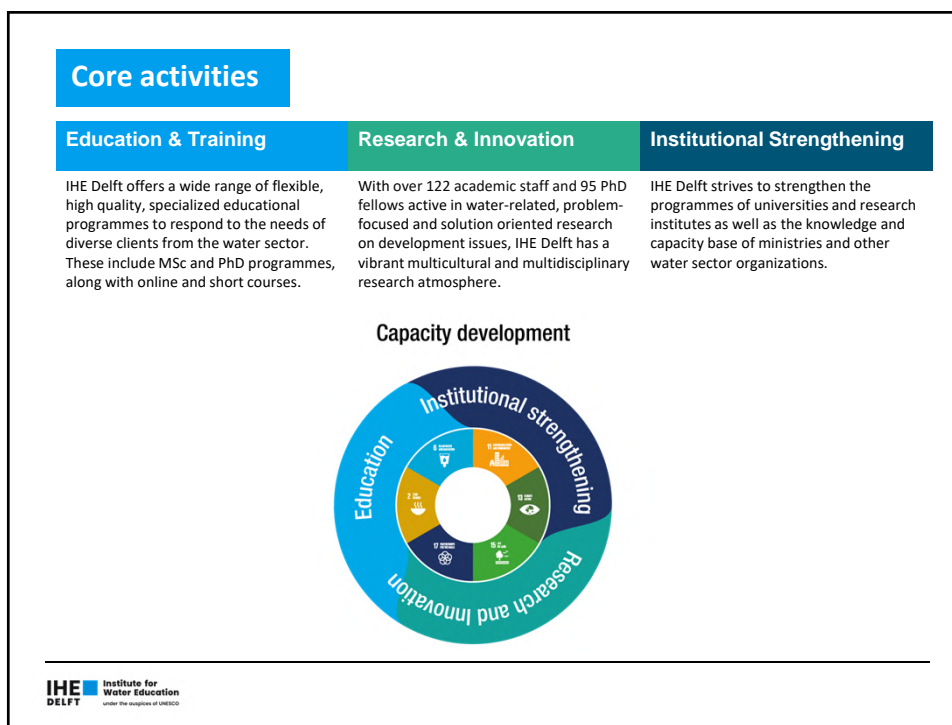
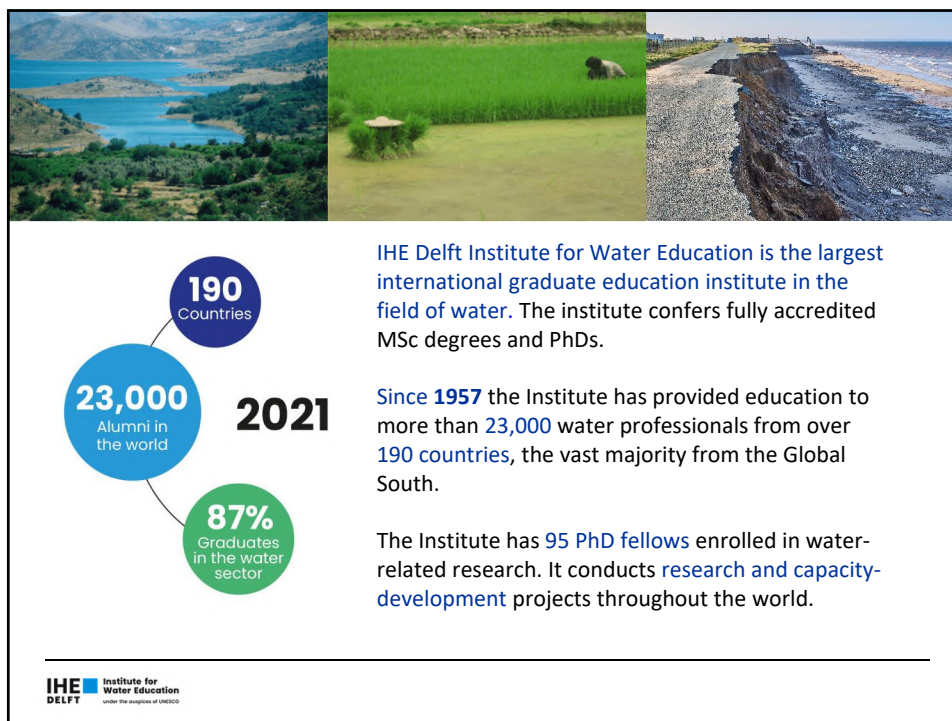
Partner of UN Water

Home » About UN-Water » Members and Partners » IHE Delft Institute for Water Education

IHE Delft Institute for Water Education

IHE Delft provides Education, training, and scientific research for individual professionals working in the water and environment sectors, as well as capacity development services for water sector organizations and institutions like ministries and departments, municipalities, water boards and water utilities, universities, training and research institutes, industries, non-governmental and private sector organisations. By doing so, IHE Delft contributes directly to target 6.a (capacity building) and indirectly to all other SDG 6 (and other water related SDGs like SDG 2, SDG 11, SDG 13 and SDG 14) as educational disciplines at IHE cover drinking water and sanitation (targets 6.1 and 6.2), water quality (6.3), integrated water resources management and water governance (6.3, 6.4) and environmental management (6.5).

Estimated budget for water and sanitation activities (USD): 40-50 million



IHE's Remote Sensing research and outcomes

- Water ForCE www.waterforce.eu

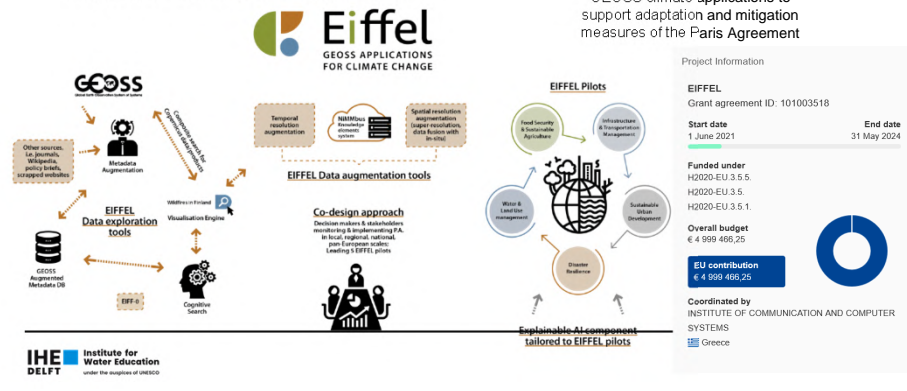
IHE's Remote Sensing research and outcomes

- Water ForCE
- Eiffel www.eiffel4climate.eu

IHE's Remote Sensing research and outcomes

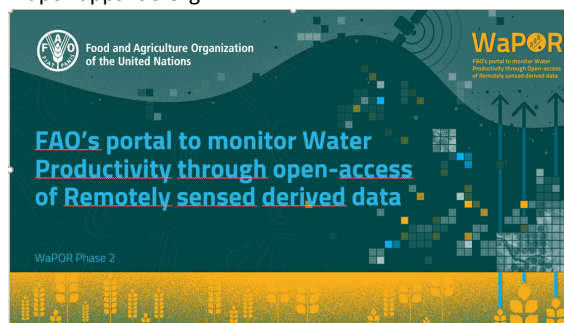
- Water ForCE
- Eiffel www.eiffel4climate.eu

Revealing the role of GEOSS as the default digital portal for building climate change adaptation & mitigation applications



IHE's Remote Sensing research and outcomes

- Water ForCE
- Eiffel www.eiffel4climate.eu
- WaPOR www.fao.org/in-action/remote-sensing-for-water-productivity
wapor.apps.fao.org



Courtesy of M. Mul

IHE's Remote Sensing research and outcomes

Applications

Data for Water Accounting

Water Accounting from Remote Sensing aims to complement the lack of routine water resources data collection and incorporates spatially distributed water consumption.

Rapid WaPOR-based WA describes the use of WaPOR data for water resources assessment, its challenges and the scope for improving accuracy with integration of national data sources.



IHE Delft Institute for Water Education
under the auspices of UNESCO

Education and capacity development for EO

- Modules in *Water for Sustainable Development* Msc programme
 - Remote sensing for agriculture
 - Remote sensing for hydrological applications
 - Introduction to digital innovations
- Short courses
 - Remote sensing for Agriculture Water Management
- Tailor made courses
 - On WaPOR
 - National level training (for Iraq: April 2018 in Istanbul)
 - Field level activities (Ethiopia, Egypt, Lebanon)
 - Online course (including in Arabic)
- Workshops



IHE Delft Institute for Water Education
under the auspices of UNESCO



thank you

i.popescu@un-ihe.org

IHE Delft Institute for Water Education
www.un-ihe.org

IHE DELFT
Institute for Water Education
under the auspices of UNESCO

 SUSTAINABLE DEVELOPMENT GOALS